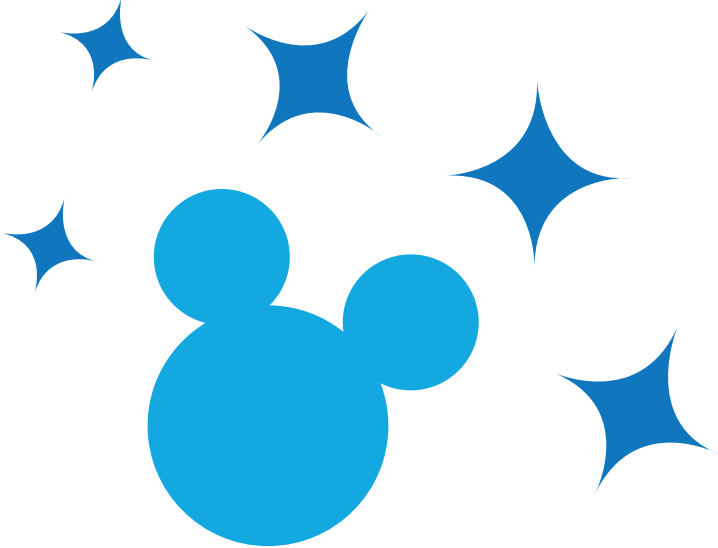
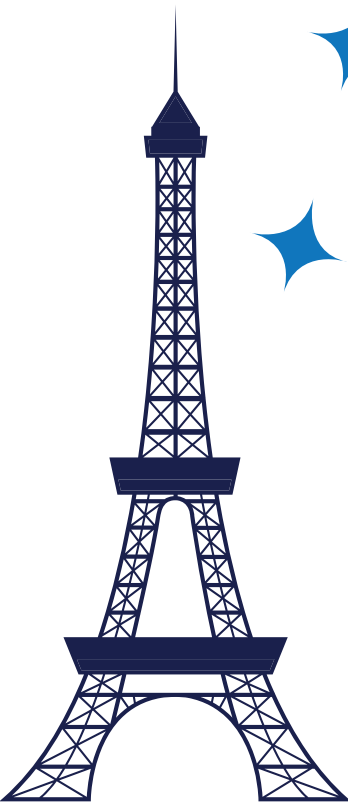


Girlguiding Manchester

Paris 2025

Challenge Pack



Contents Page

| | |
|---------------------------------|----------|
| Completing the Challenge | 3 |
| Part One - Travel | 4 |
| • Walk the route | 4 |
| • Coach Fun | 4 |
| • Money Money Money | 5 |
| • I see some ships! | 5 |
| Part Two - Disney | 6 |
| • Sign your name | 6 |
| • Delicious Disney | 6 |
| • Parade Performances | 7 |
| • Recycled Rides | 8 |
| Part Three - Paris | 9 |
| • Wearable Words | 9 |
| • Bridge Builders | 9 |
| • Portrait Painters | 10 |
| • Tower Time | 10 |

Completing the Challenge

This challenge has three parts. In **Travel**, you will learn about currencies, travelling abroad and maps. In **Disney**, you will discover more about the magic of Disney and what makes it so special. **Paris** helps you to explore the capital city of France, understand the French language and enjoy the fabulous arts.

We've worked hard to make this challenge suitable for all ages, but some activities are better suited to certain sections. We've indicated this on each page, but please also use your own judgement – you know your unit best! Some activities require you to leave your unit meeting place – please make sure you've gathered consent and completed a risk assessment beforehand.

We'd really love to see what you get up to as part of the challenge. Be sure to send your pictures to: pr@girlguidingmanchester.org.uk

Challenge Requirements

Below, we recommend how many activities each section should aim to complete.

- **Rainbows** choose 3 activities including one from each section, and one using the 'take it further' option.
- **Brownies** choose 4 activities including at least one from each section, and one using the 'take it further' option.
- **Guides** choose 5 activities including at least one from each section, and one using the 'take it further' option.
- **Rangers** and adults choose 6 activities including two from each section, and one using the 'take it further' option.

Ordering Badges

Of course, as with all challenges, there is a badge to accompany the challenge! Please order your badges via the link below and they will be sent straight to you.

<https://forms.gle/jQec3u2Cj4xr4BJZ8>

Cost is £1.00 per badge (plus P&P).

Part One - Travel

Walk the Route

Using a few different maps, have a look at the route between Manchester and Paris. Maybe have a look at Google Earth and find your meeting place - can you follow the route to Paris?

As a unit, make a giant map at your meeting place and pretend to travel the route together. Maybe you could use chalk on the car park to make it really huge! Or everyday objects such as pens or cups laid on the floor. Encourage the girls to add in things that interest them on the route - these Brownies added ships into the Channel!



Take it further: Using your giant map, draw on paper your own smaller maps of the route. Try and think about scale, and what symbols you use. **Don't forget, all maps should have a title and a key.**



Coach Fun

Learn and play some games that you can play on a coach journey. Ideas include:

- **Rock, Paper, Scissors** - the classic hand-shapes game.
- **Eye Spy** - use the traditional letter version, or spy colours (I spy something red!) if your girls aren't as confident with spelling.
- **See a Rainbow** - can you spot something for every colour of the rainbow in order? How about letters of the alphabet?
- **Tell me three things** - a simple game that is surprisingly fun! Take it in turns to challenge a friend to tell you three things about a topic that you choose. Younger girls can choose simple topics e.g school, cars, princesses. Older girls can choose more specific subjects to follow their interests e.g k-pop, their favourite guide badge, skincare.
- **Pencil and paper games** - noughts and crosses, hangman, boxes, and battleships are all classics that girls might like to learn.

Or choose games of your own! Any game you can play in pairs without moving around or any equipment will work on a coach.

Take it further: Can you invent your own? Maybe set up chairs like a coach to practice.

Money Money Money

People in France use Euros and cents instead of pounds and pence. Compare the two currencies and do some rubbings of French and British coins. Why not create some art from your rubbings?

Take it further: Go and change money for real at a post office or bureau de change. What is the current exchange rate?



I see some Ships!

The sea between Great Britain and France is called The English Channel (French people call it La Manche). Did you know it is the busiest sea route for ships in the world? Every day over 500 ships pass through the Channel.

Find a website or app that tracks shipping and have a look at what ships are in the Channel right now.

How many cross Channel ferries can you find?

Can you find any cargo ships -where are they heading? Where have they been? Cargo ships are ships that are bringing things from other countries to Europe (including the UK) and taking things from Europe around the world. What other types of boats are in the Channel?

www.marinetraffic.com

www.vesselfinder.com

Take it further: Visit a local shop and find as many things as you can that have been imported (brought here from another country). Don't forget to check clothing labels as well as the food labels. Maybe mark all the places on a world map (printable available at the back).

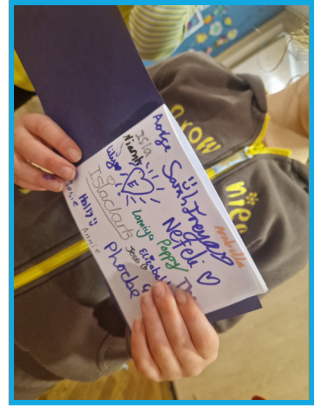
Part Two - Disney

Sign your name

A popular activity at Disney parks is collecting autographs from the characters. Make and decorate your own autograph books.

You could use and decorate ready made notebooks, or like these Brownies, make your own.

- Use 8 sheets of A4 paper and cut it in half lengthways - trim about 1cm of the short length of the plain paper.
- Add a cover made from A4 coloured card cut lengthways, and staple in the middle using a long armed stapler.
- Now decorate!.. some girls collected signatures from all their Brownie friends.



Take it further: Do a Disney character quiz with your unit, so that any girls going to Paris can recognise them in the park (or just for fun!). Did you know that some characters have different names in France? For younger girls, hide Disney colouring pages around the room for them to find and identify (and then colour!) Older girls could try a Kahoot! or Youtube Disney Characters quiz.



Delicious Disney

Lots of food you can buy at Disneyland is made into fun Disney themed shapes. Make some Disney themed food with your unit. Here are a couple of examples:

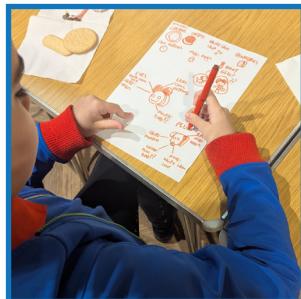
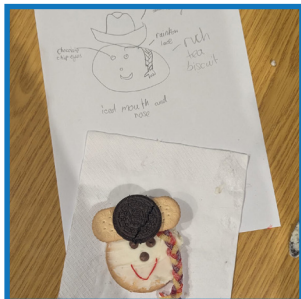
Use a 'double stuffed' Oreo type biscuit, and carefully push two giant chocolate buttons in to be Mickey Mouse's ears! You could try and push a cake pop stick in to make it a lolly, however, biscuits are fragile and easy to break! You could decorate your lolly, for example with a bow to make it Minnie Mouse.

Make the aliens from Toy Story by getting a large grape and using food glue or icing to stick three white chocolate drops to it (or one, or two!) Use a tiny blob of black icing to make the centre of the eyes.

Push a cocktail stick all the way through the grape and colour the top green to be the alien's antennae.

Take it further: Play a 'Ready Steady Cook' style game and ask the girls to design their own treats inspired by a Disney character. Provide them with lots of different foods and see what they can create!

This group of Guides from Didsbury came up with some great ideas!



Parade Performances

Disneyland is famous for its parades! Have a look online at an example. Put together your own parade as a unit - think about how your dance moves can move forward to keep up with the parade. Maybe each Six /Patrol could be a different part of the parade?

Watch a parade here:

<https://youtu.be/SdgI57JA1x8?si=rHRmGyllusI5laeb>

Take it further: Add costumes to your parade! Wear Disney costumes from home, or make your own. Maybe use bin bags, newspaper and tape and see what you can create!





Recycled Rides..!

Using junk and craft materials, make your own theme park in your unit. Provide the girls with lots of (clean) recyclables and plenty of glue, tape, paper fasteners, string and kebab sticks, or whatever you have available. You could tell the girls the plan and ask them to bring things from home that they can use.

Ask the girls what they might see at a theme park - rollercoasters, log flumes, roundabouts, or even toilets, shops and car parks! What can they build? Can they work together with different girls doing different parts of the theme park?

Take it further: Can you make rides that move? There are lots of examples online, or see what the girls can come up with? You could even introduce simple motors or led lights and investigate how simple electronics could make your rides move.

Here's some inspiration:

Art integrated project /Spinning Carnival Ride / Science Toy /Science Project /Science Model:

<https://youtu.be/rtuZfdQR9FI?si=2i44ea8LQWxzbec9>

Make a amazing amusement park ride from cardboard:

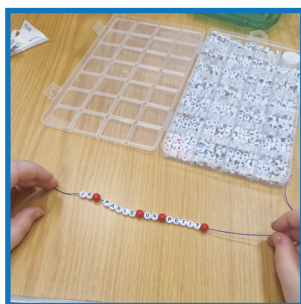
<https://youtu.be/CdVqGfM23DA?si=1ZORaWIPmM0kMqn9>

Part Three - Paris

Wearable Words

People in France don't speak English, they speak French - and they love it when we have a go at speaking it. Learn some simple French by making vocabulary bracelets.

- Find a bead for each letter of the word or phrase.
- Measure the length of elastic string that will fit around your wrist.
- Tape the left end of your bracelet down on your work surface.
- Begin stringing colorful beads onto your bracelet.
- String your alphabet beads onto the bracelet.
- Finalise with colourful beads.
- Tie into a knot.



Take it further: try to learn some whole phrases that are new to you in French. Test each other!

Bonjour: Hello

Bonsoir: Good evening

Au revoir: Goodbye

Merci: Thank you

C'est délicieux!: It's delicious!

Enchanté(e): Nice to meet you

S'il vous plaît: Please

Je m'appelle *** : My name is ***

Bridge Builders

There are 37 bridges over the river Seine in Paris. Can you build a bridge strong enough to drive a toy car over?

In your unit, place a 30cm wide 'river' on the floor across the room (use fabric, tissue or chalk?) and give the girls toy cars - Give them a range of materials such as newspaper, card, or lolly sticks. Younger girls could use construction toys such as lego or magnetic tiles.

Remind the girls that boats still need to be able to pass under the bridge, and the car needs to be able to drive smoothly over the bridge - they can't jump!

Take it further: Make the challenge more difficult by making the river wider, or increasing the number of toy cars the bridge can hold. Who can build the widest or strongest bridge?

Portrait painters

Some of the words most famous art galleries and pictures are in Paris. Have a look at some (e.g. the Mona Lisa) Draw or paint portraits of each other.



Take it further: Visit an art gallery with your unit.

Tower Time

The most famous landmark in Paris is the Eiffel Tower - but how much do you know about it? Take part in an Eiffel Tower Quiz to learn more!

Older girls could research and write their own quiz / Younger ones could take part in this true/false quiz.

Place a 'Vrai' (true) sign at one end of the room, and a 'Faux' (False) sign at the other. The girls should run to the answer they think is correct.

Use these statements, or research some of your own!

The Eiffel tower is in London. (Faux, it's in Paris, France)

The Eiffel tower is made of cheese. (Faux, it's made of iron, a metal)

The Eiffel tower is the most visited place in the world you have to pay to get in. (Vrai)

The Eiffel tower was built by a man called Gustave Eiffel (Vrai, he owned the building company that built it)

The Eiffel tower is covered in 60 tonnes of paint (Vrai!)

The Eiffel tower was built in 2 weeks (Faux, it took two years, two months, and 5 days)

The Eiffel tower changes height through the year (Vrai, it expands in the heat of the summer, and shrinks in the cold of the winter)

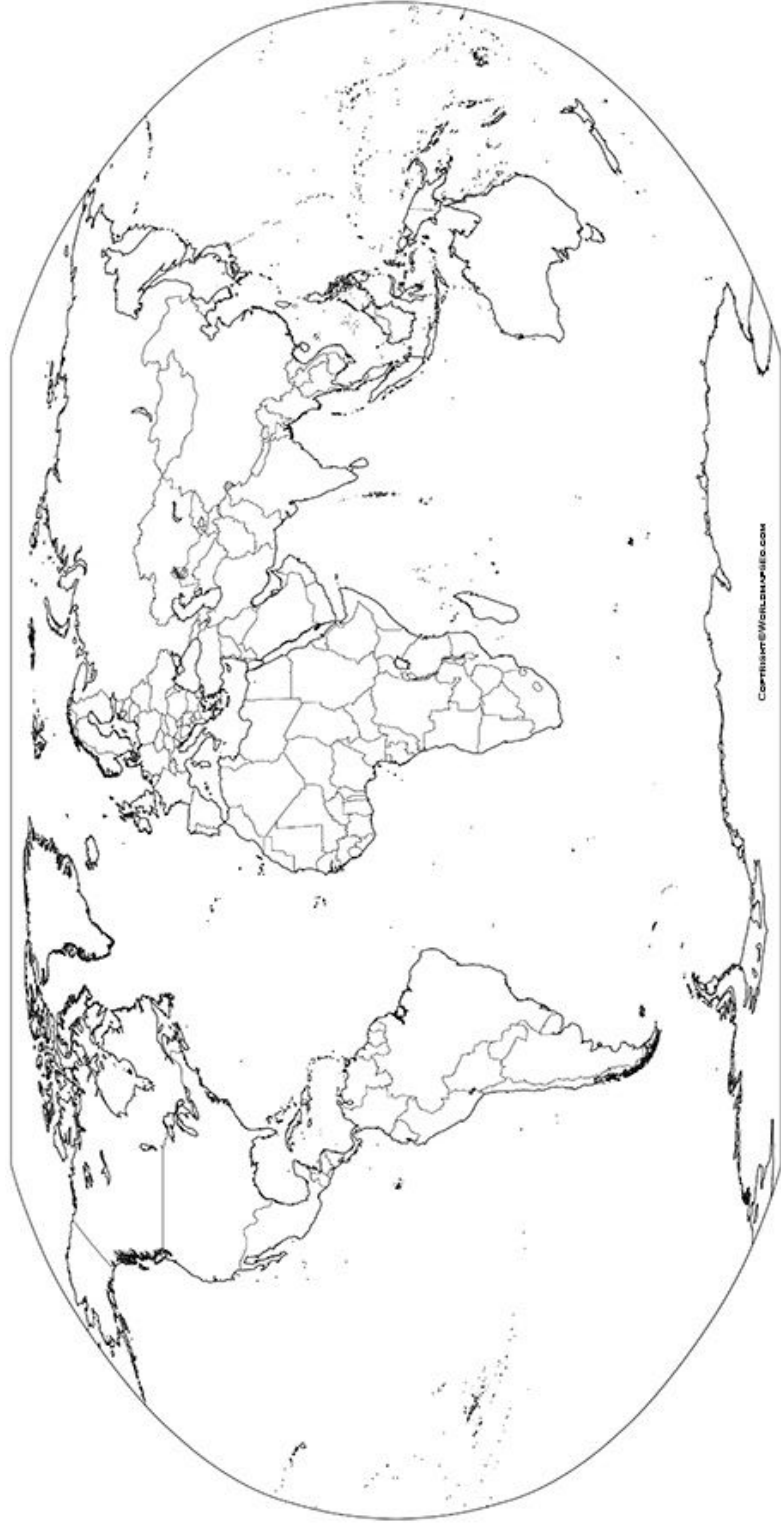
When the Eiffel tower was built it was painted red (Vrai - nowadays it is painted 'Eiffel Tower Brown')

The Eiffel tower has a rollercoaster inside (Faux - although it did once have an ice rink!)

The Eiffel tower has wind turbines to generate electricity (Vrai)

Take it further: Did you know that in 2015 the tower was improved to make it more eco-friendly, including installing wind turbines to generate electricity, and devices to catch and use rainwater to flush the towers toilets! Do a survey of your meeting place - are there any ways you could make it more eco-friendly?

Printable World Map



Copyright © www.printable.com

Created January 2025 for
Girlguiding Manchester Join In
Challenge - Paris 2025